

Start

- TPMS light must be ON for this device to work.
- Check that the Box has no Damage after Shipment.
- Vehicle has to be clear from RF - Radio Frequency interference such as garage door openers, chargers or any other aftermarket wireless sources.
- Open the lid and insert **2 X AA quality batteries like "Procell"** or similar but leave the lid open. Switch the box on and LED on PCB board should be steady ON or start flashing every 3-6 seconds.
- After device is connected to the vehicle leave the box always ON.

SRSDRIVE
51 The Woods
Buncrana
Co. Donegal F93 V226
Ireland



Sales & Customer Support email:
Technical Support: support@tpmsbypass.com
Sales: sales@srsdrive.com

+44(0)7783725020 +353(0)838478878
Mon - Fri 9.00 – 17.00 Sat 10.00 – 2.00

For best prices and discounts visit:
www.tpmsbypass.com

Installation/Learn Procedure

STEP 1 Instructions

1. Open Bypass box and insert **2 x AA quality batteries like "Procell"** or similar and switch it ON.
2. Check that LED on circuit board inside the box starts flashing every 3-5 seconds. (LED will flash with intervals. If not, then most likely RX unit – TPMS Receiver in the vehicle is faulty. Please check this with a dealer.)
3. Place the box close to the TPMS Receiver location usually, it's near the driver side fuse/smart junction box or glove box. If in doubt, ask your dealer for receiver location.

STEP 2 Vehicle Learn/Connect Procedure

1. Let the vehicle sit OFF for a minimum of 30 minutes.
2. Drive your vehicle for at least 10 min above 25Mph/40Kpm. The relearn may take from 10-35 minutes of driving. The vehicle will learn the Bypass Module and turn the TPMS light off. DONE!
Bypass box must remain switches ON at all times. New quality batteries should last for approx. 1 year.

If TPMS light is still ON then:

- Make sure the vehicle is switched off for 30 min.
- Repeat the drive and make sure that you drive continuously for 15 min without stopping the car and above 25Mph.

If Bypass box is still not connecting to the vehicle and TPMS light is still ON then refer to our Troubleshooting section below or Fault-Finding Chart on the back of the page.

WARNING No adjustments are required on the PCB. The PCB has Sensitive Components therefore avoid contact with hands or metallic object as damage may occur to your unit and invalidate the Guarantee.

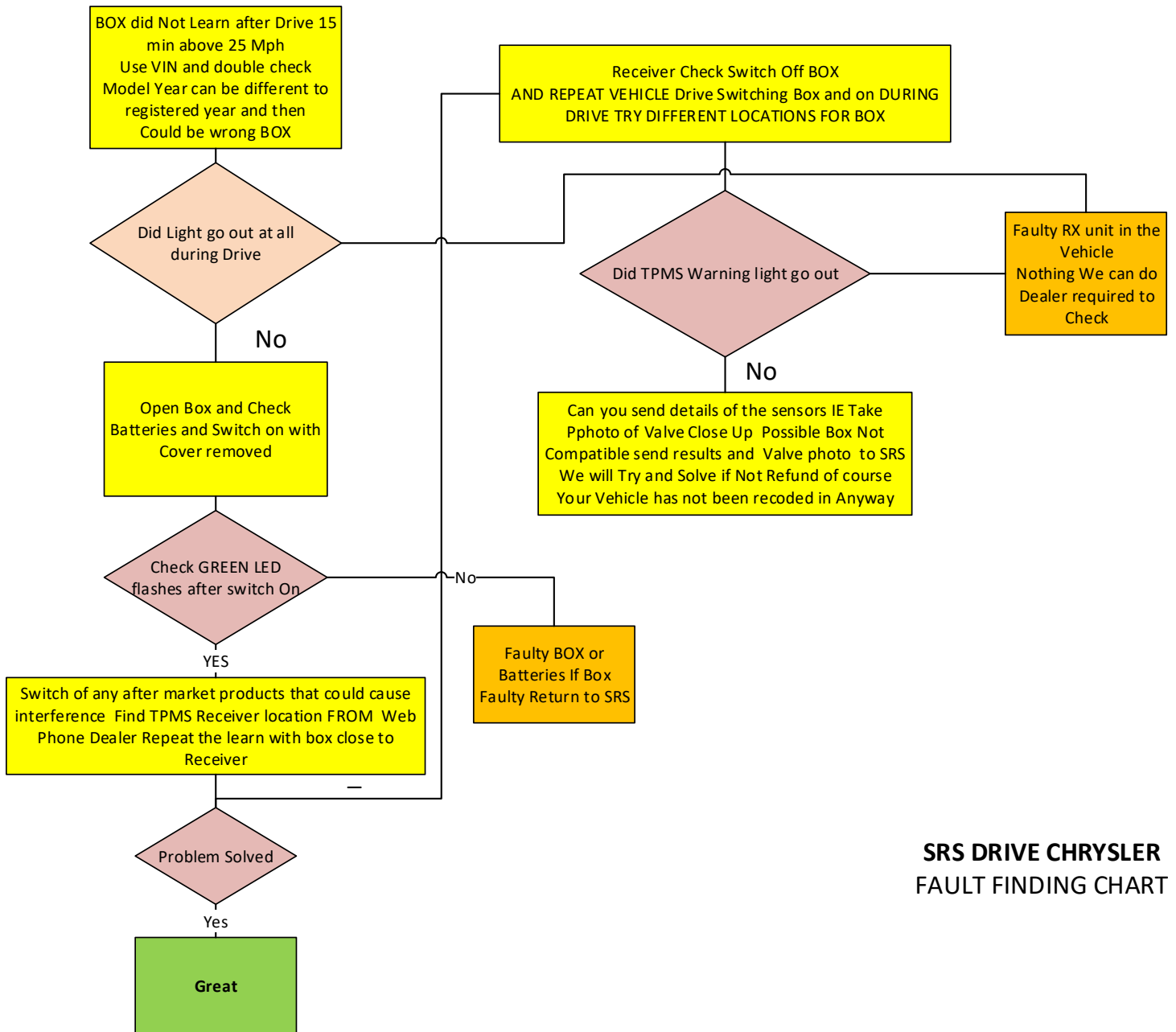
IMPORTANT: Please use high quality batteries like "Procell" or similar and not just a standard alkaline batteries.

Unit	Max	Typical	Min
Voltage	5V	3.0V	2.1V
Freq (US)	315.19MHz	315.00MHz	314.89MHz
Freq(EU)	433.15MHz	433.00MHz	432.94MHz
Battery Life	2 Yrs	1 .2Yrs	1 Yr
Transmit Power	10 μW	9 μW	8μW

Troubleshooting & Important Notes

1. TPMS light has to be ON for this device to work.
 2. Check with the dealer TPMS Receiver location & place the box closer
 3. Reinsert the batteries and try the programming procedure again, drive the car continuously above 25Mph for 15 min.
 4. Check that LED inside the box is steady ON or flashing roughly every 3 - 6 seconds when switched ON.
 5. The unit operates by Radio Frequency, therefore, please switch of any possible interference source during Learn Procedure
 6. In 95% of cases the sensors Malfunction, however, it is possible that the TPMS receiver IN THE Vehicle can be the root cause of the LIGHT ON and in this case, the UNIT will not Learn.
 7. If the unit does not re-learn to the Vehicle Contact us for further advice.
- If the UNIT has not Learned to your Vehicle this means the TPMS system has not been Re-coded in any way.





**SRS DRIVE CHRYSLER
FAULT FINDING CHART**

Still having issues with our device?

Contact us by eBay message or email and provide us information as below and we'll be happy to assist you further:

- Your vehicle model and exact manufacturing date.
- Version of TPMS box you have received as A3, B3, C2 or E1.
- LED on circuit board is it flashing every 3-6 seconds.
- Manufacturer recommended tire pressure on your vehicle front and rear wheels.
- What installation steps are you able to complete and what exactly does not work?

Note: For exact manufacturing date look at the door sticker for month and year of your vehicle (DATE OF MFR).